

Alle Maßangaben beginnen am Heckspiegel!

(Ruder = 70-55x190)

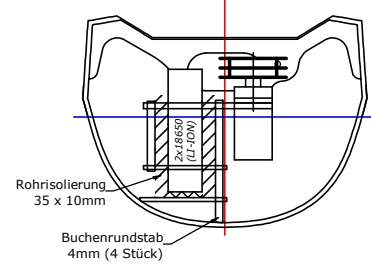
manta2017 IOM - Technische Daten

Displaced volume:	3.780 cm ³
Total hull length: (+11mm Bumper = 999mm)	988 mm
Total length of submerged body:	983 mm
Beam over all:	152 mm
Total beam of submerged body:	147 mm
Design draft:	59 mm
Longitudinal center of buoyancy (LCB):	466 mm
Wetted surface area:	146980 mm ²
Waterplane area:	109080 mm ²
Main Station area:	6730 mm ²
Prismatic coefficient (Cp):	0.5713
Block coefficient (Cb):	0.4460
Midship coefficient (Cm) :	0,7806

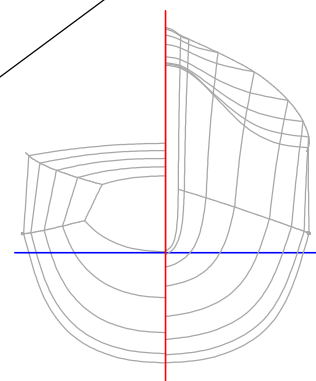
Zu der eigentlichen Rumpfverdrängung (3780g) kommen noch gut 280g -300g für die Anhänge (Schwert+Blei & Ruder).
 Max. Gesamtgewicht/Verdrängung (ready to sail) = 4080g
 Anzustreben sind natürlich knapp über die 4Kg. Aber etwas Reserve ist noch drin falls das Boot doch zu schwer werden sollte ;-)

Viel Spaß beim bauen & segeln ... Andy

(321)



(644)



Scale 1:4

manta2017 - IOM

Design by: Andreas Hoffmann

v2.12 Feb-2017

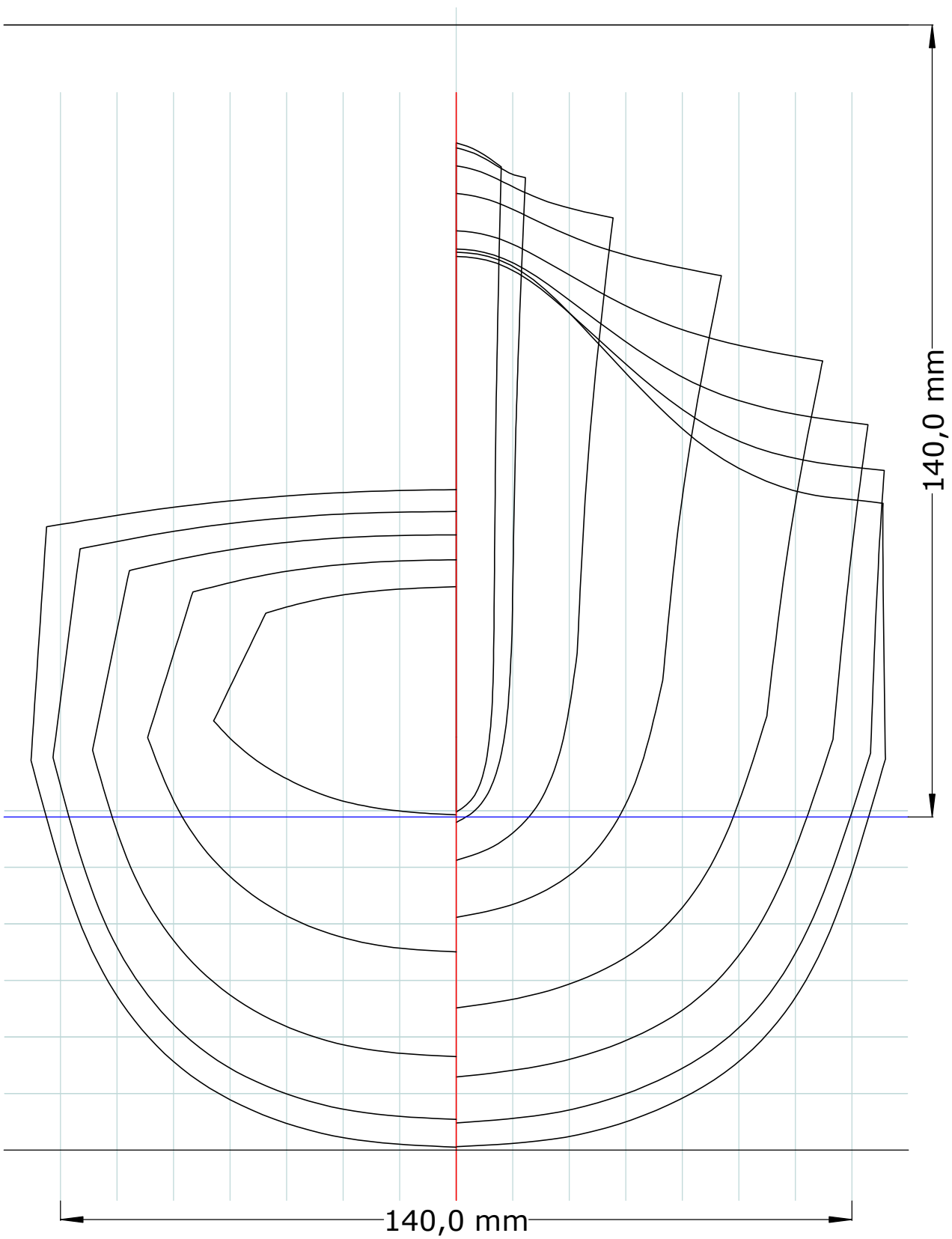
<https://rg-andy.blogspot.de/>

andyhoff@web.de



Anstellwinkel = 2Grad zur CWL (Bulb-CG=452)

420mm max. Tiefgang



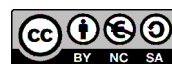
manta2017 - IOM

Design by: Andreas Hoffmann

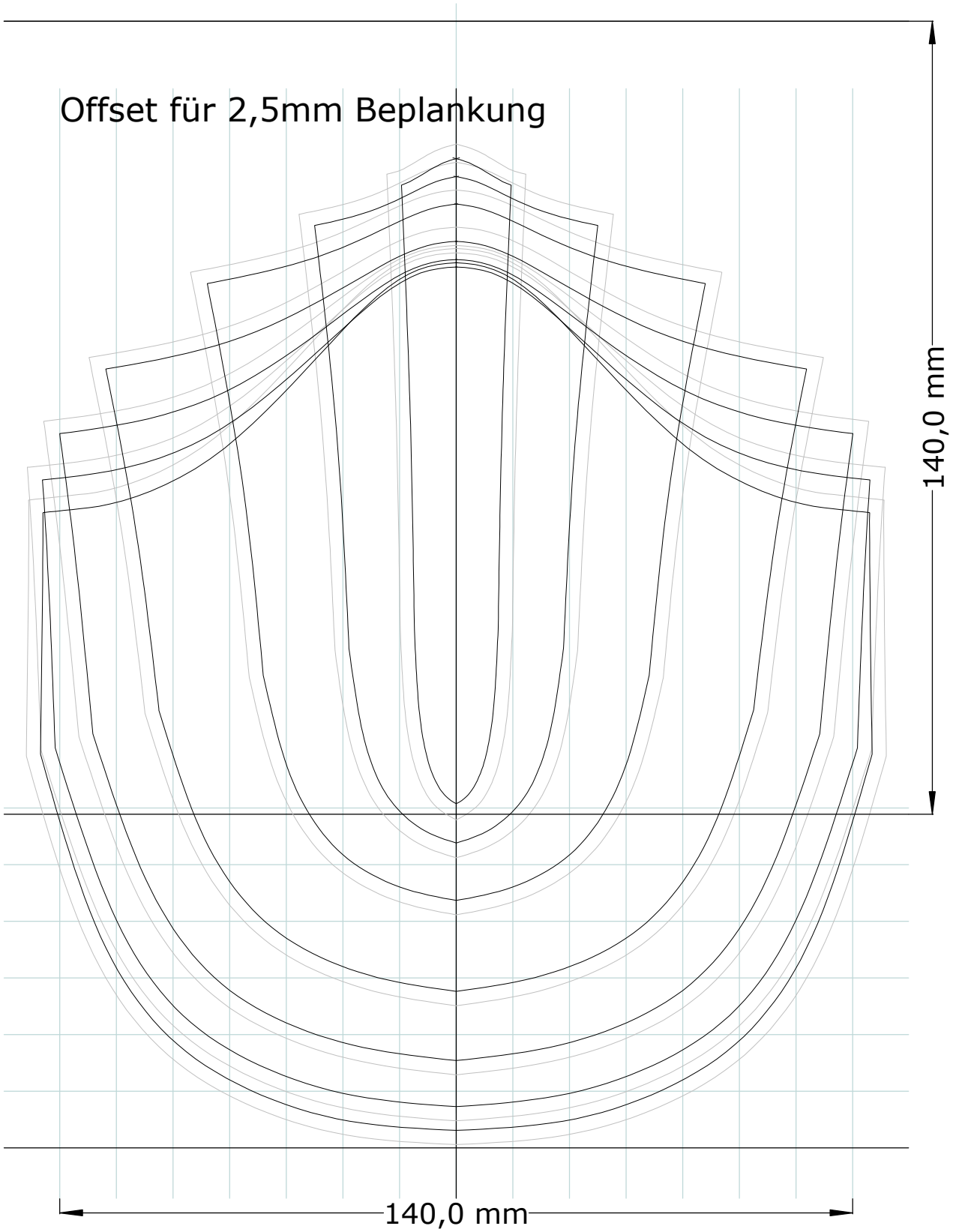
v2.12 Feb-2017

<https://rg-andy.blogspot.de/>

andyhoff@web.de



Offset für 2,5mm Beplankung



manta2017 - IOM

Design by: Andreas Hoffmann

v2.12 Feb-2017

<https://rg-andy.blogspot.de/>



andynoff@web.de

Offset für 2,5mm Beplankung

140,0 mm

140,0 mm

manta2017 - IOM

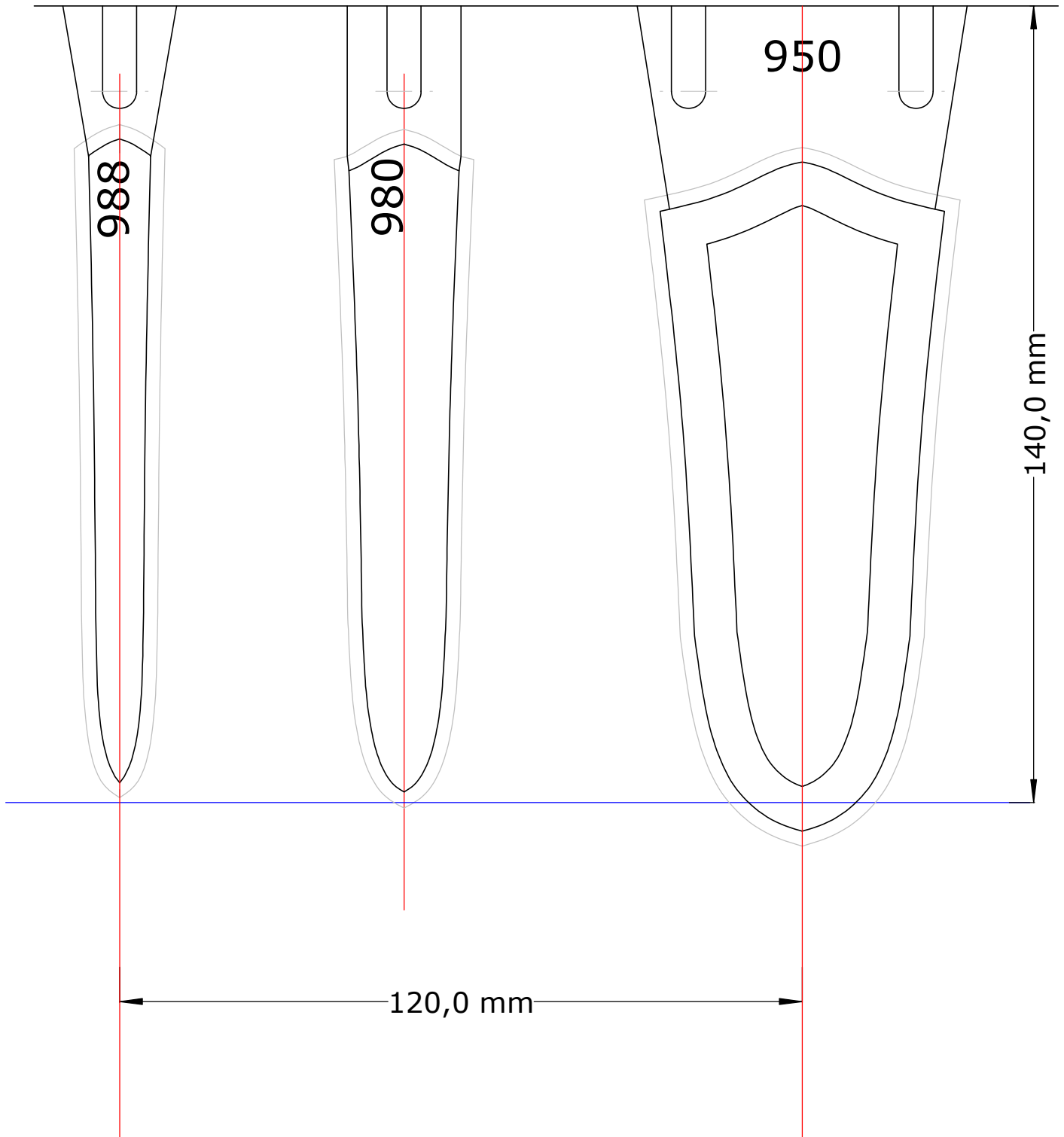
Design by: Andreas Hoffmann

v2.12 Feb-2017

<https://rg-andy.blogspot.de/>



andynoff@web.de



Offset für Beplankung -2,5mm

manta2017 - IOM

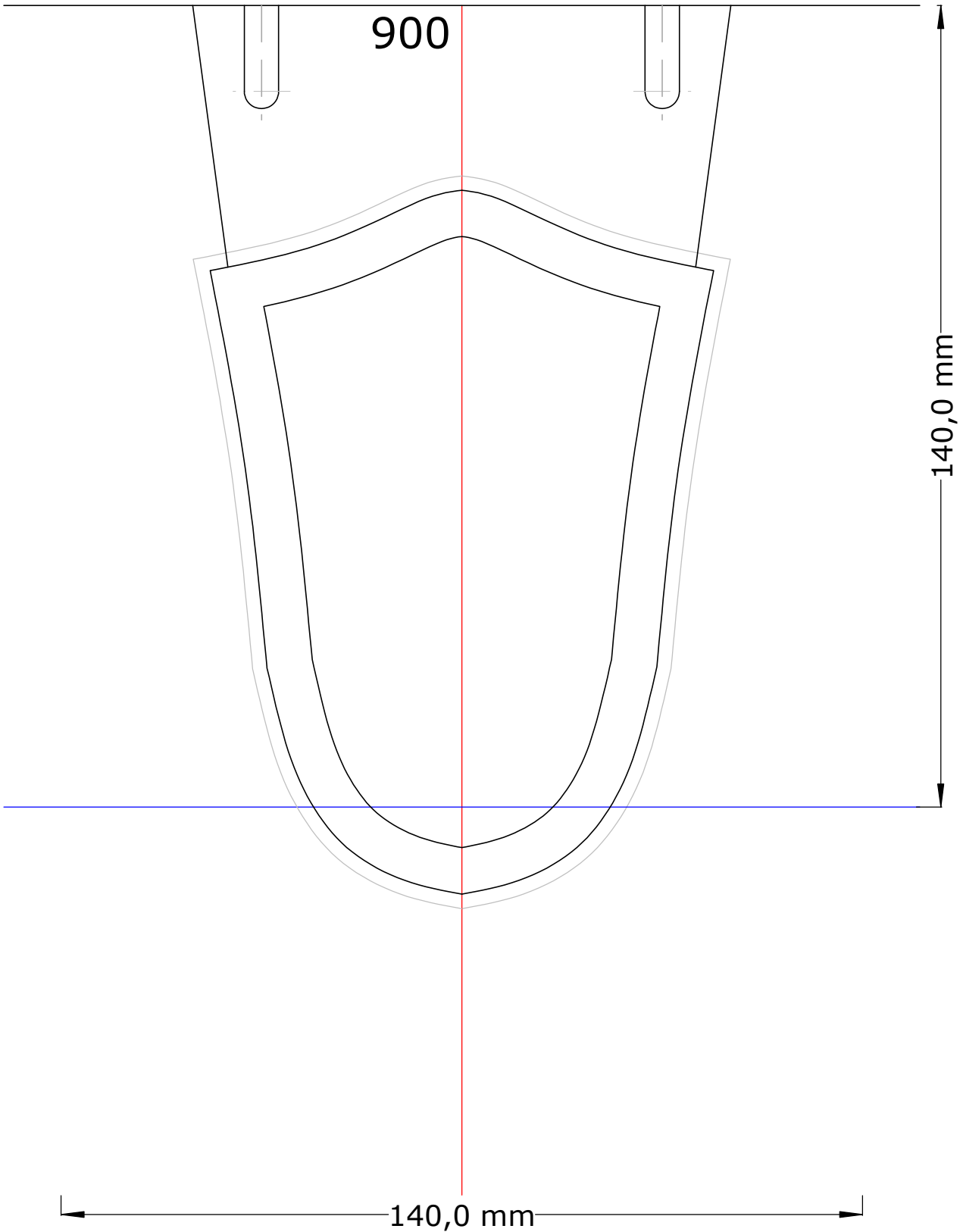
Design by: Andreas Hoffmann

v2.12 Feb-2017

<https://rg-andy.blogspot.de/>



andyhoff@web.de



Offset für Beplankung -2,5mm

manta2017 - IOM

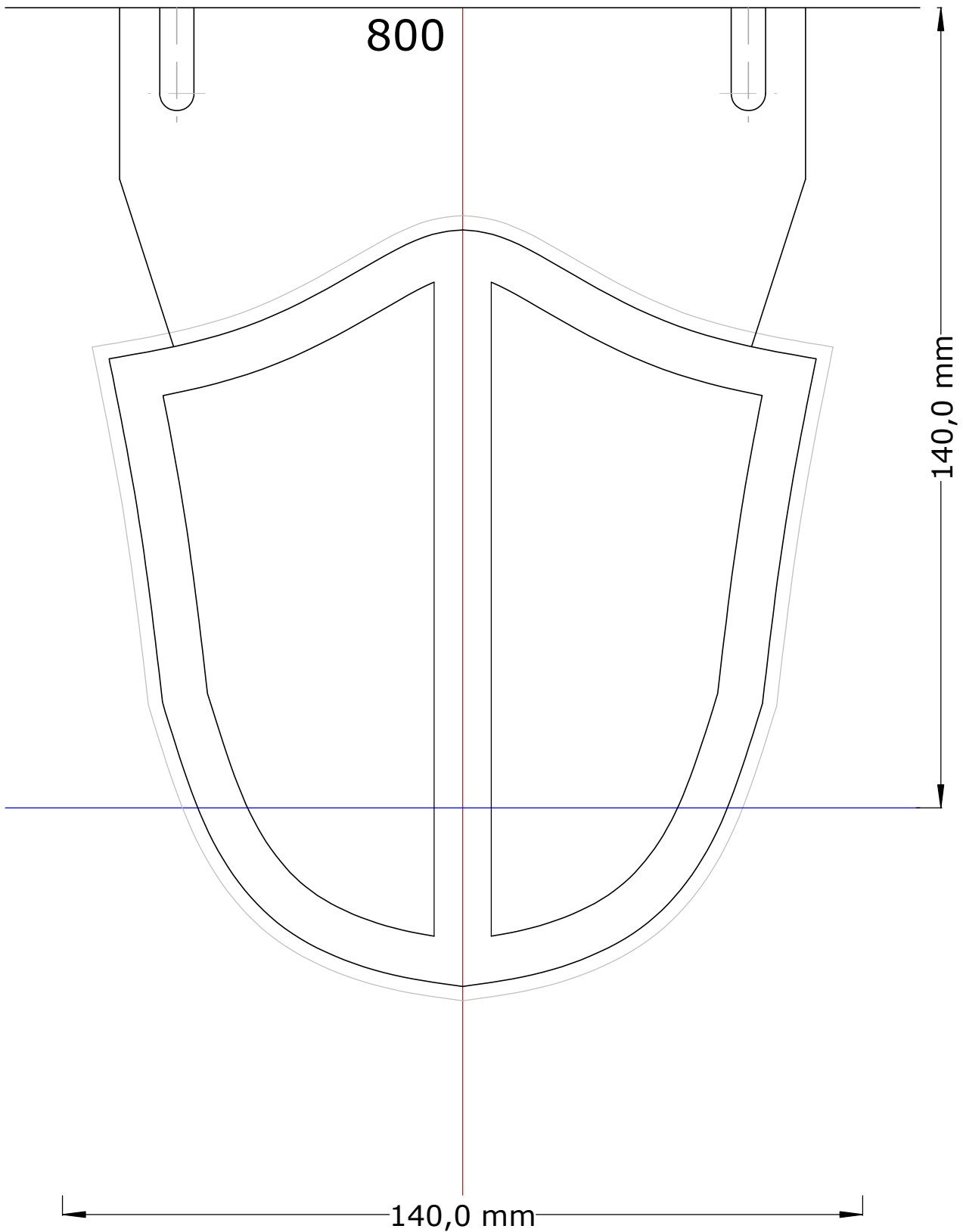
Design by: Andreas Hoffmann

v2.12 Feb-2017

<https://rg-andy.blogspot.de/>



andyhoff@web.de



Offset für Beplankung -2,5mm

manta2017 - IOM

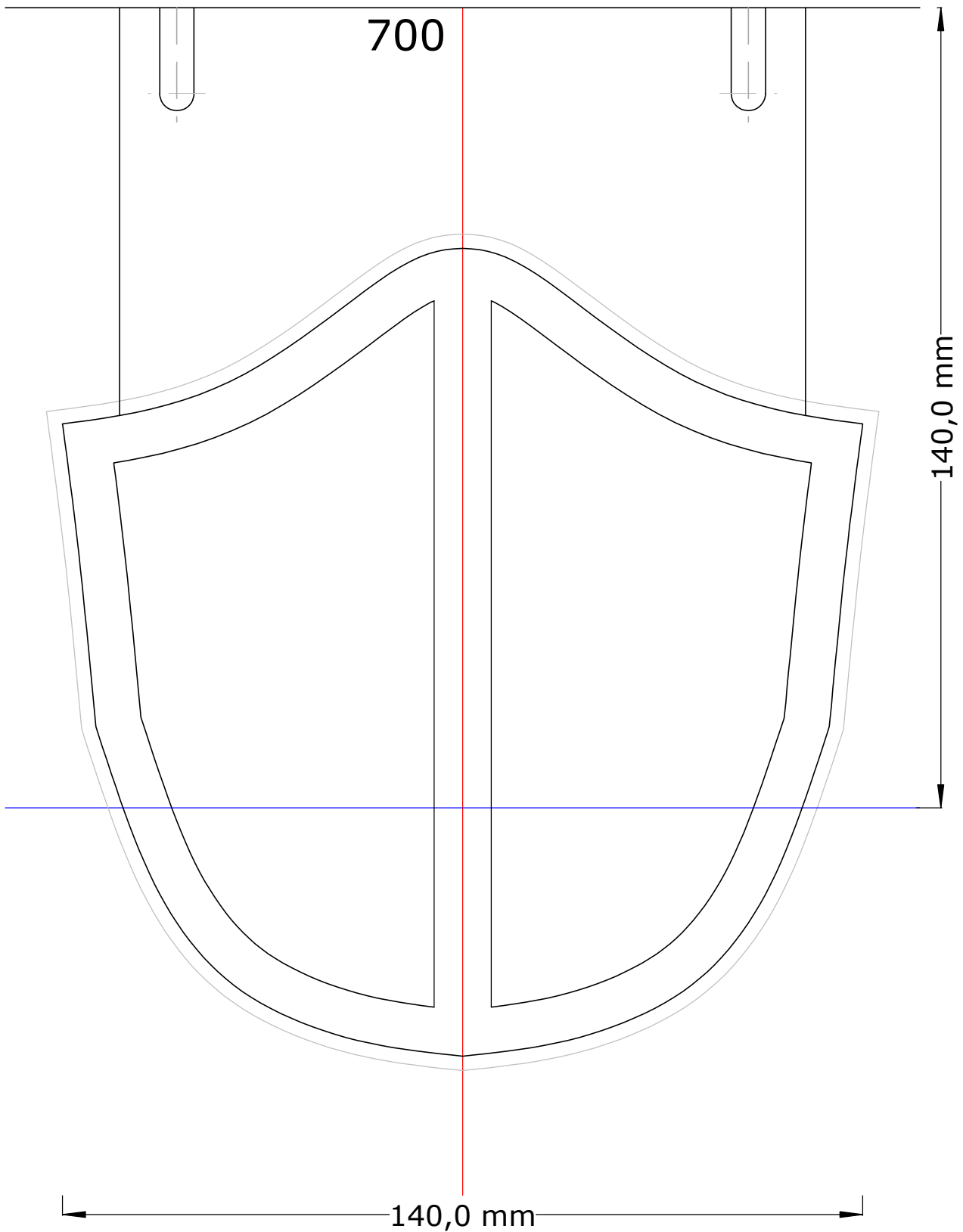
Design by: Andreas Hoffmann

v2.12 Feb-2017

<https://rg-andy.blogspot.de/>



andyhoff@web.de



Offset für Beplankung -2,5mm

manta2017 - IOM

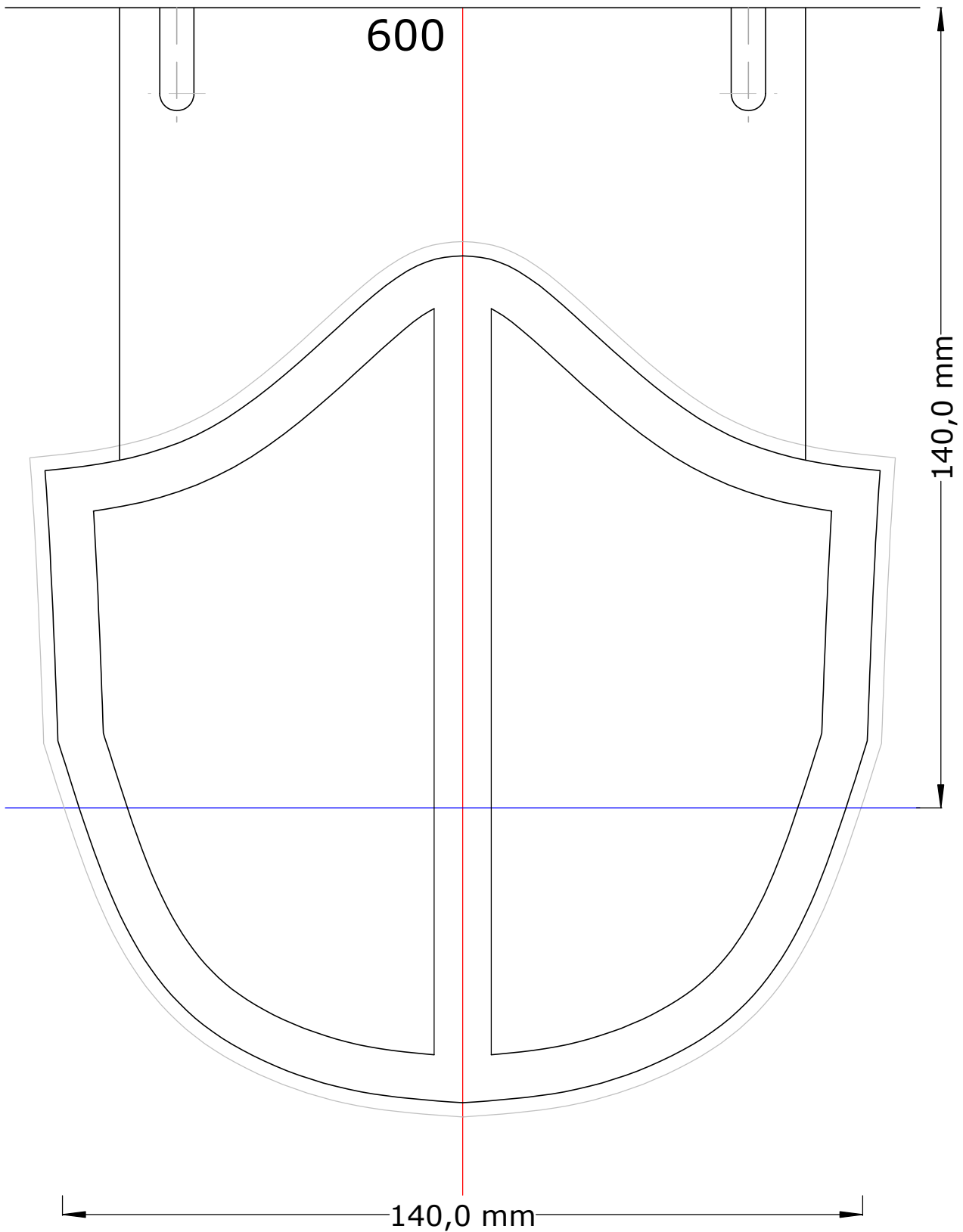
Design by: Andreas Hoffmann

v2.12 Feb-2017

<https://rg-andy.blogspot.de/>



andyhoff@web.de



Offset für Beplankung -2,5mm

manta2017 - IOM

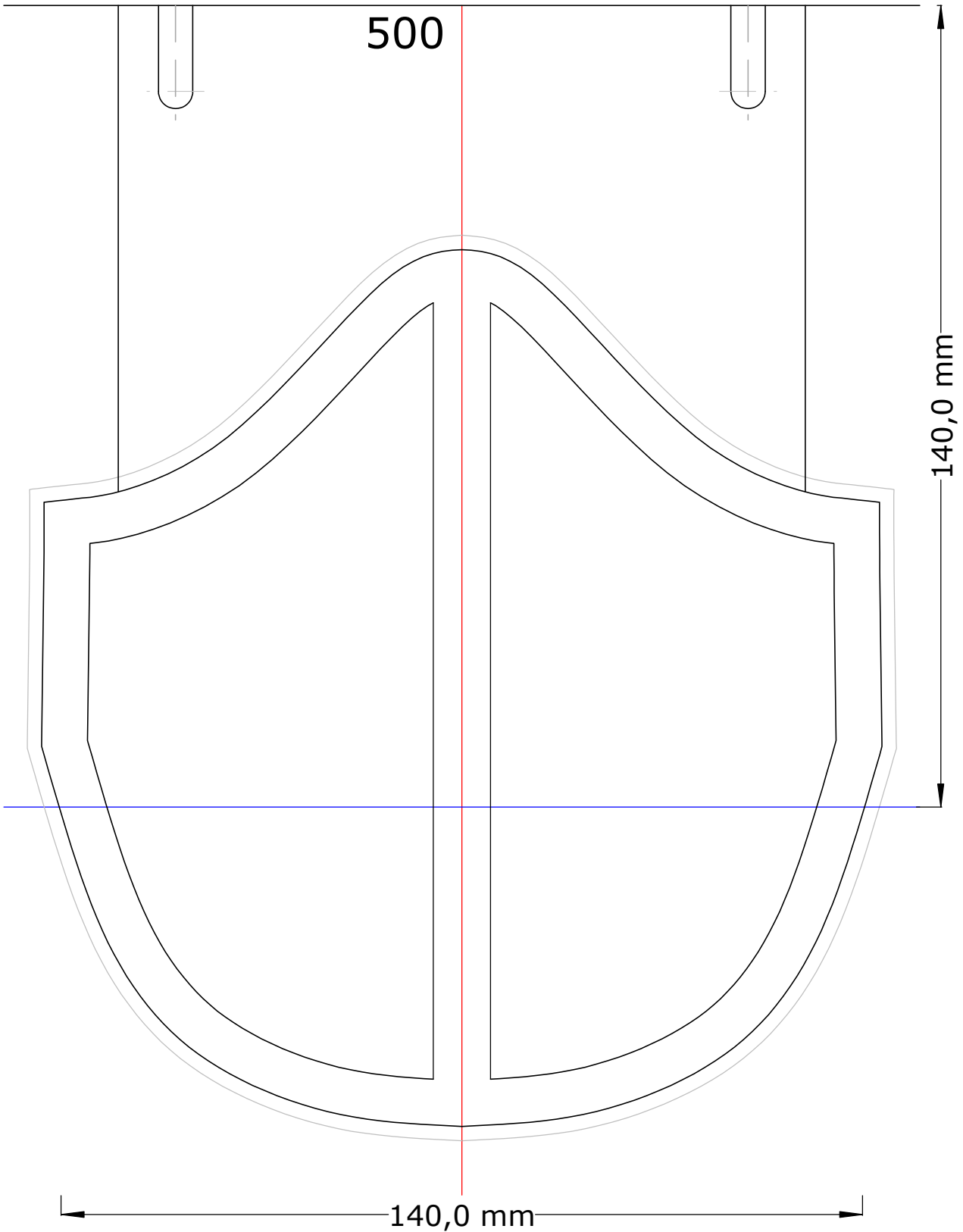
Design by: Andreas Hoffmann

v2.12 Feb-2017

<https://rg-andy.blogspot.de/>



andyhoff@web.de



Offset für Beplankung -2,5mm

manta2017 - IOM

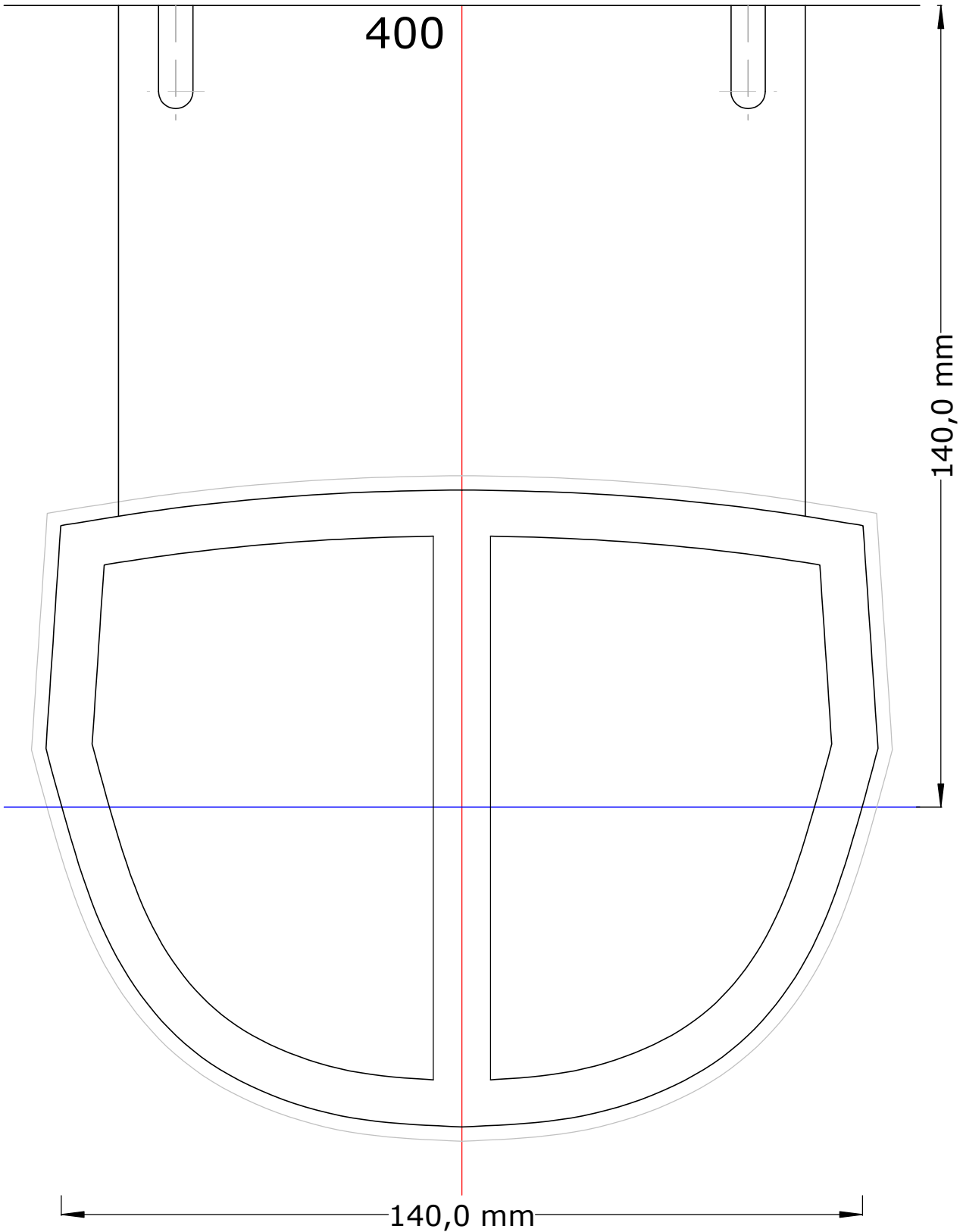
Design by: Andreas Hoffmann

v2.12 Feb-2017

<https://rg-andy.blogspot.de/>



andyhoff@web.de



Offset für Beplankung -2,5mm

manta2017 - IOM

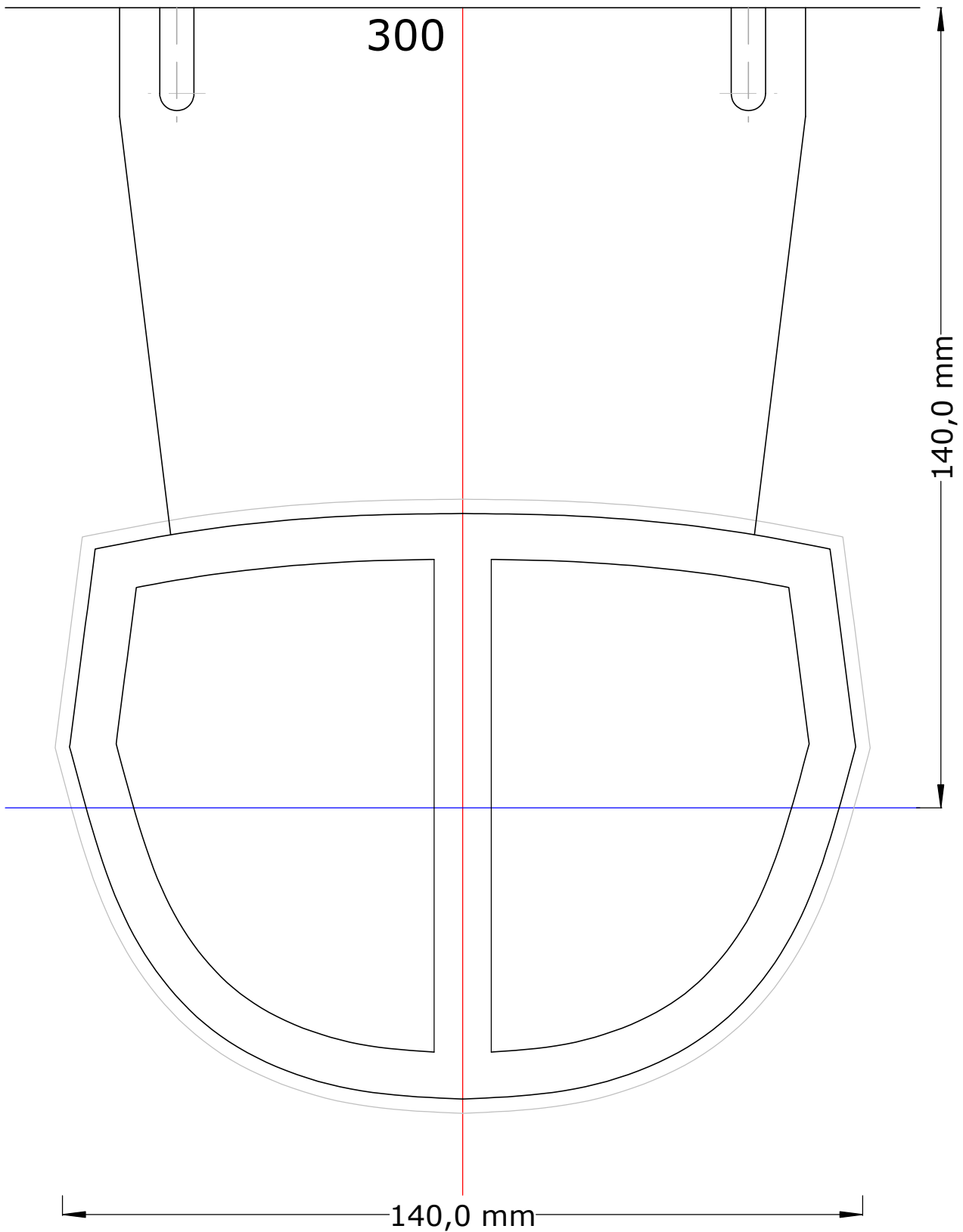
Design by: Andreas Hoffmann

v2.12 Feb-2017

<https://rg-andy.blogspot.de/>



andryhoff@web.de



Offset für Beplankung -2,5mm

manta2017 - IOM

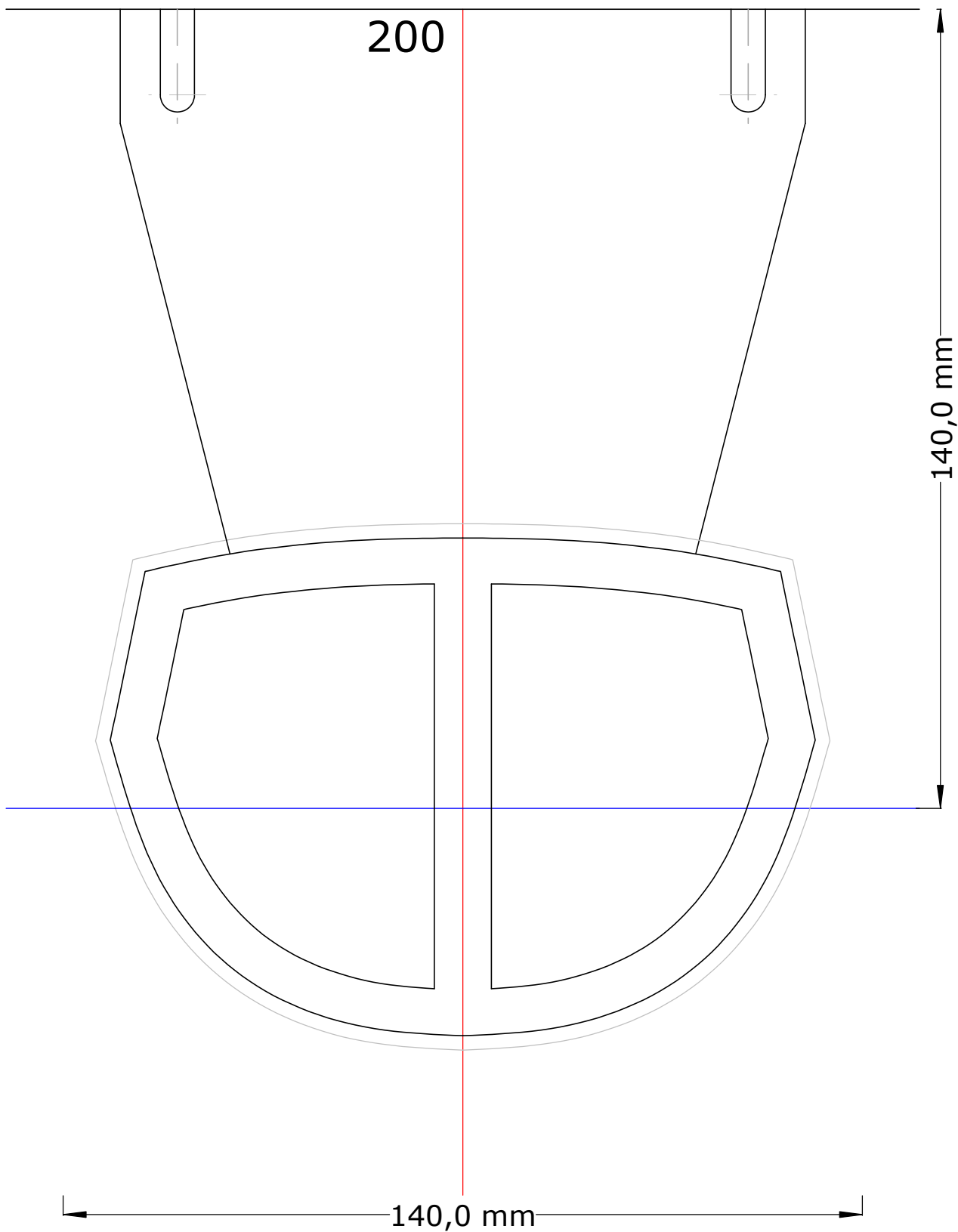
Design by: Andreas Hoffmann

v2.12 Feb-2017

<https://rg-andy.blogspot.de/>



andyhoff@web.de



Offset für Beplankung -2,5mm

manta2017 - IOM

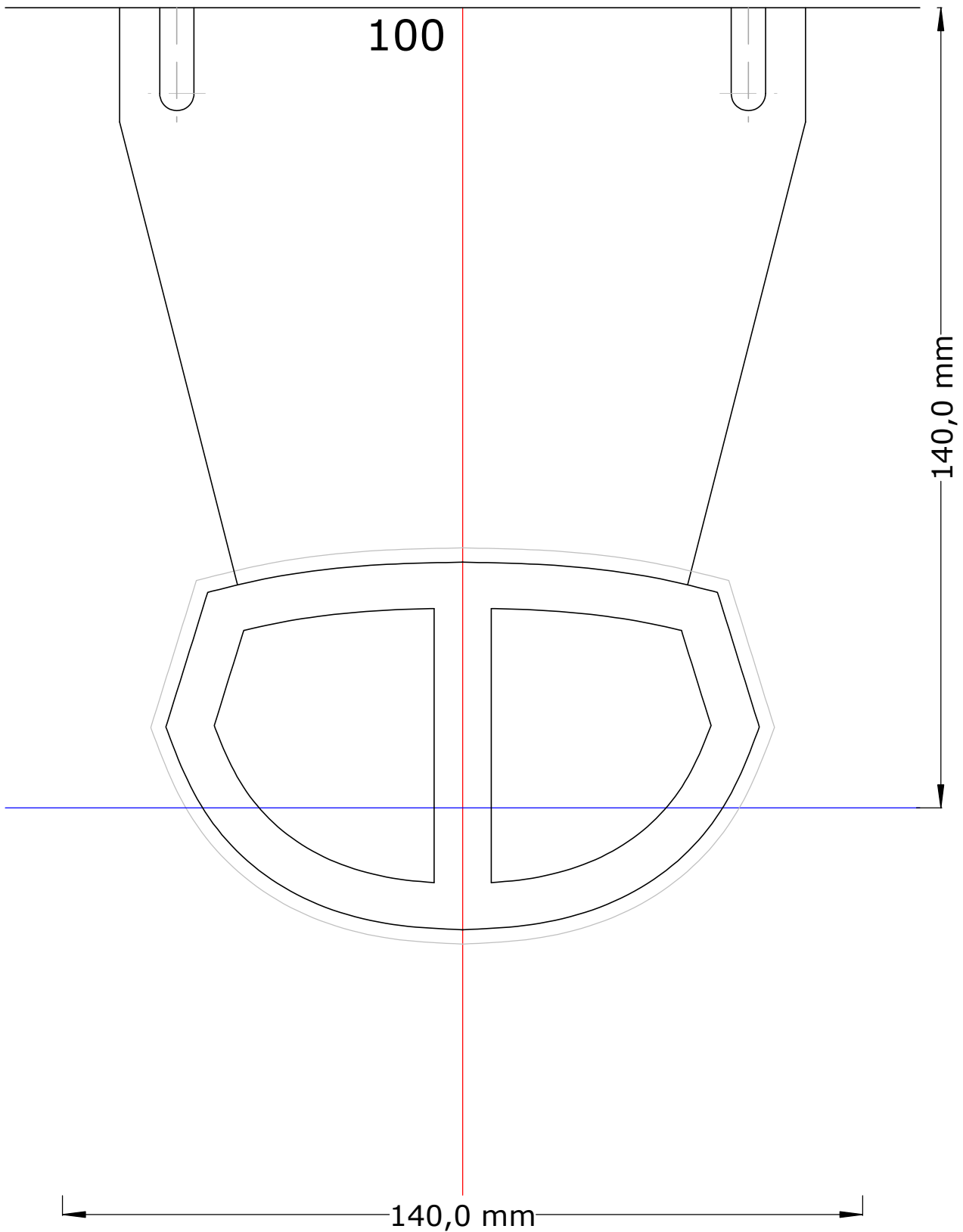
Design by: Andreas Hoffmann

v2.12 Feb-2017

<https://rg-andy.blogspot.de/>



andyhoff@web.de



Offset für Beplankung -2,5mm

manta2017 - IOM

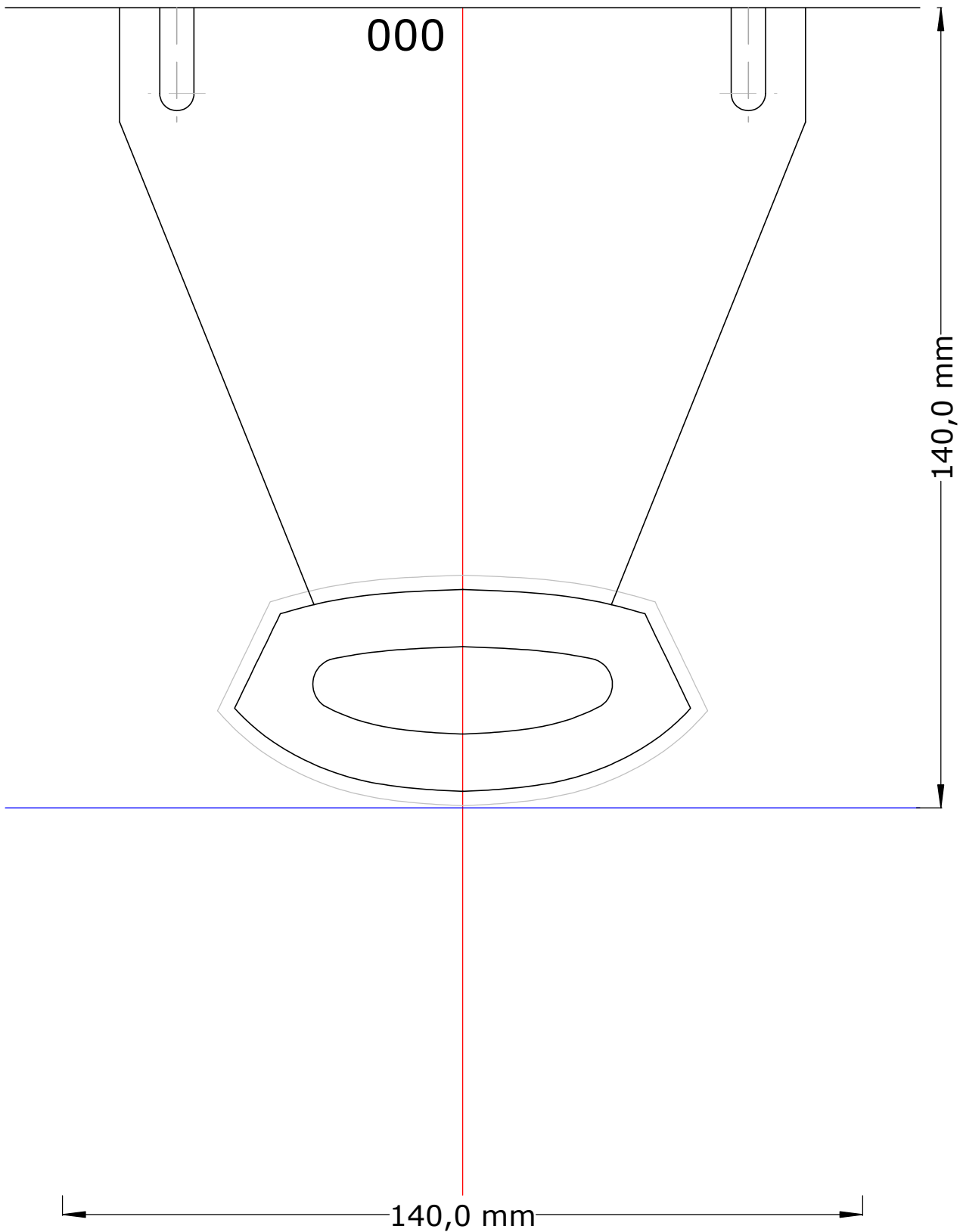
Design by: Andreas Hoffmann

v2.12 Feb-2017

<https://rg-andy.blogspot.de/>



andyhoff@web.de



Offset für Beplankung -2,5mm

manta2017 - IOM

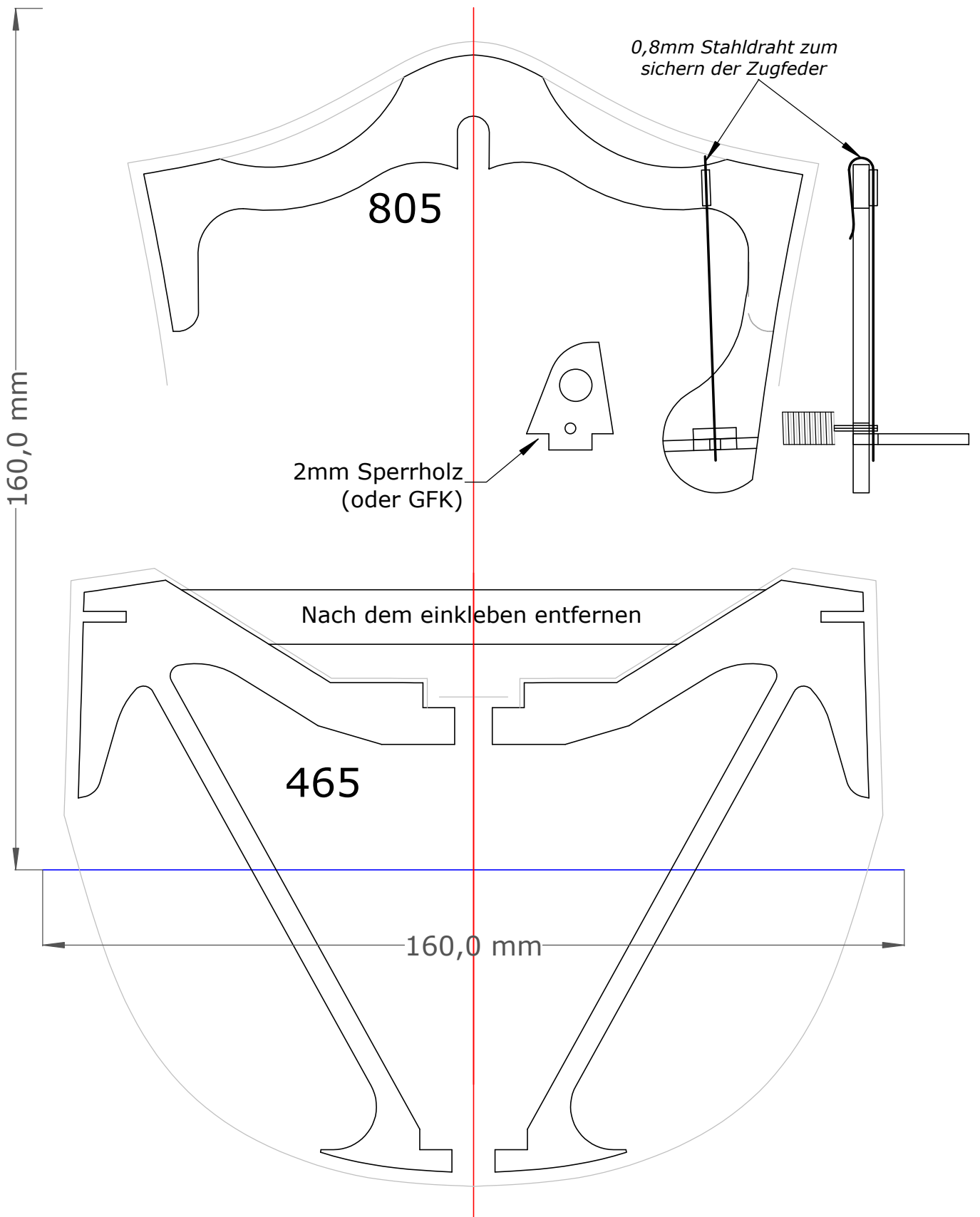
Design by: Andreas Hoffmann

v2.12 Feb-2017

<https://rg-andy.blogspot.de/>



andyhoff@web.de



manta2017 - IOM

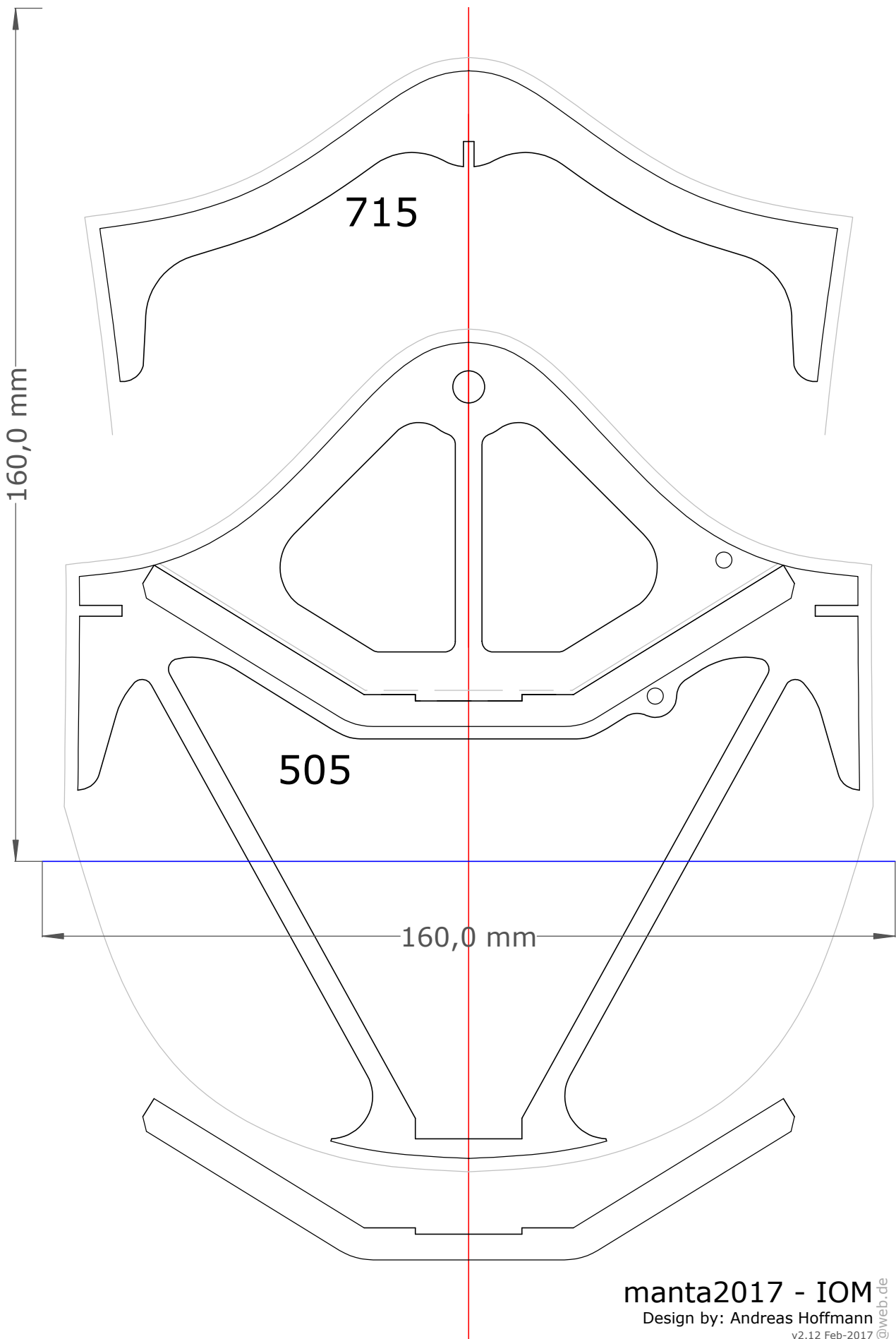
Design by: Andreas Hoffmann

v2.12 Feb-2017

<https://rg-andy.blogspot.de/>



andyhoff@web.de



manta2017 - IOM

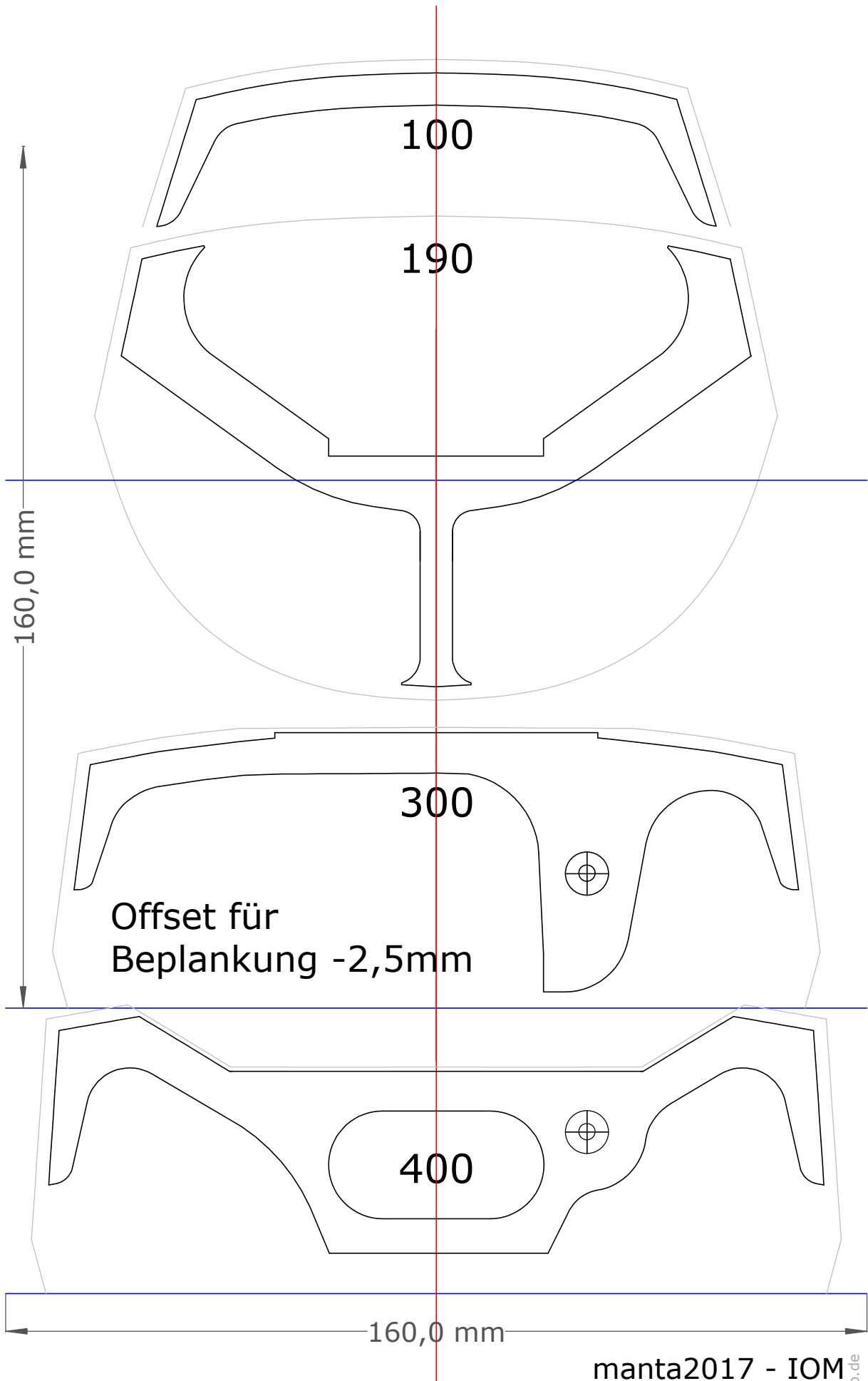
Design by: Andreas Hoffmann

v2.12 Feb-2017

<https://rg-andy.blogspot.de/>



andyhoff@web.de



manta2017 - IOM

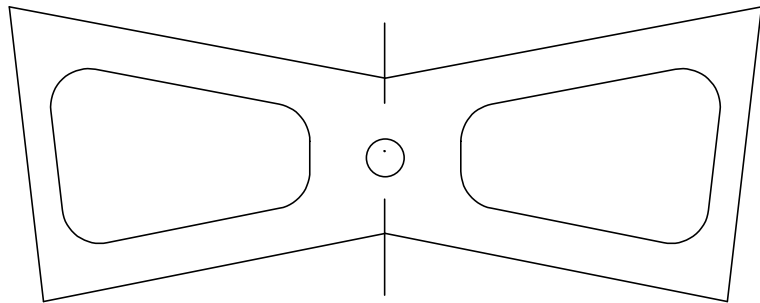
Design by: Andreas Hoffmann

v2.12 Feb-2017

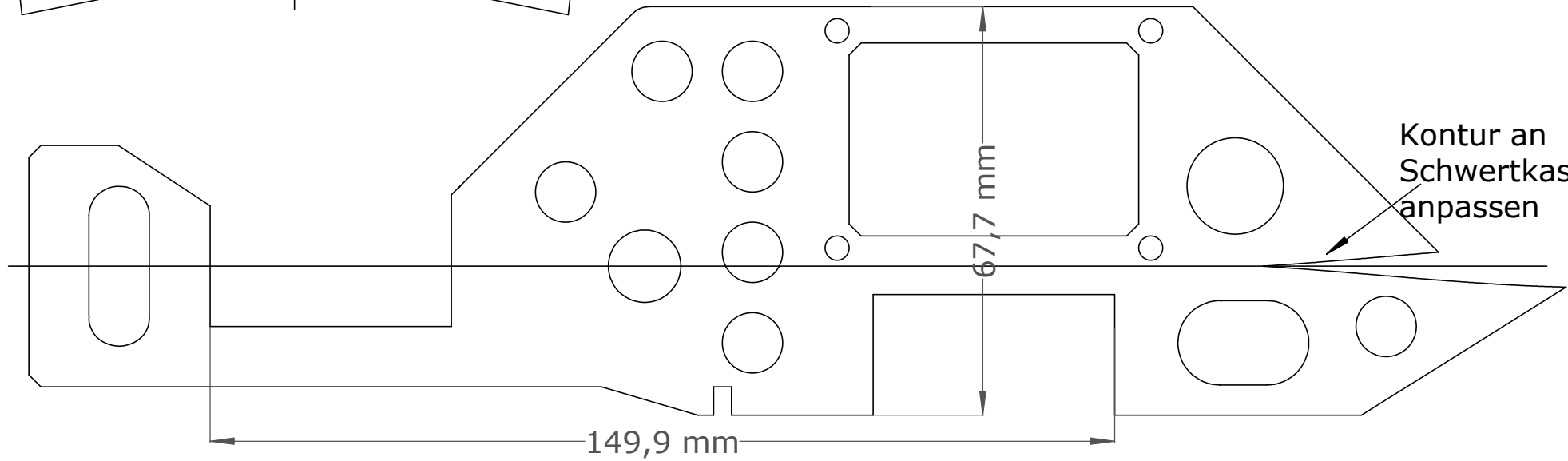
<https://rg-andy.blogspot.de/>



andyhoff@web.de



3mm Sperrholz

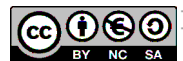


manta2017 - IOM

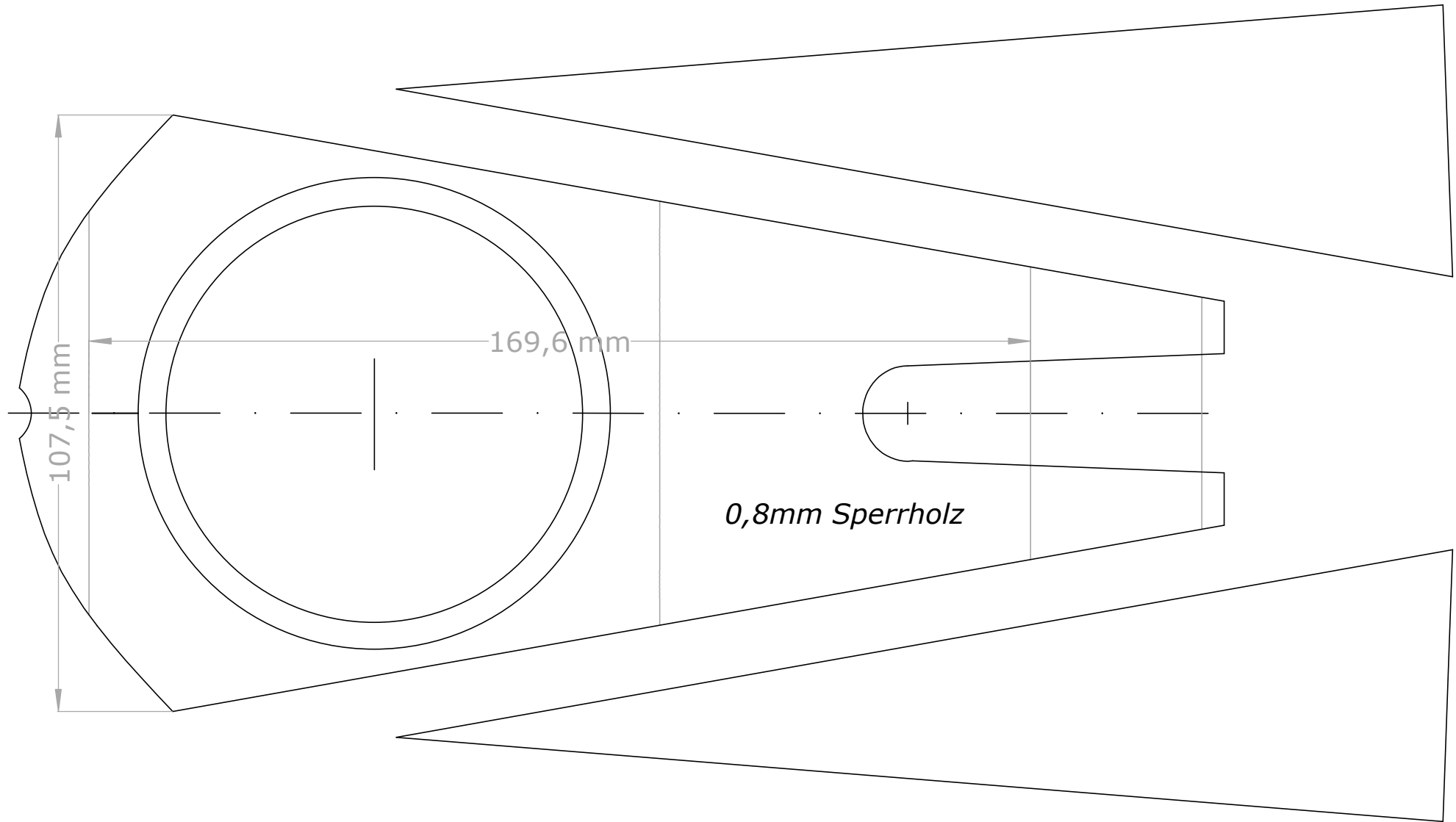
Design by: Andreas Hoffmann

v2.12 Feb-2017

<https://rg-andy.blogspot.de/>



andyhoff@web.de



manta2017 - IOM

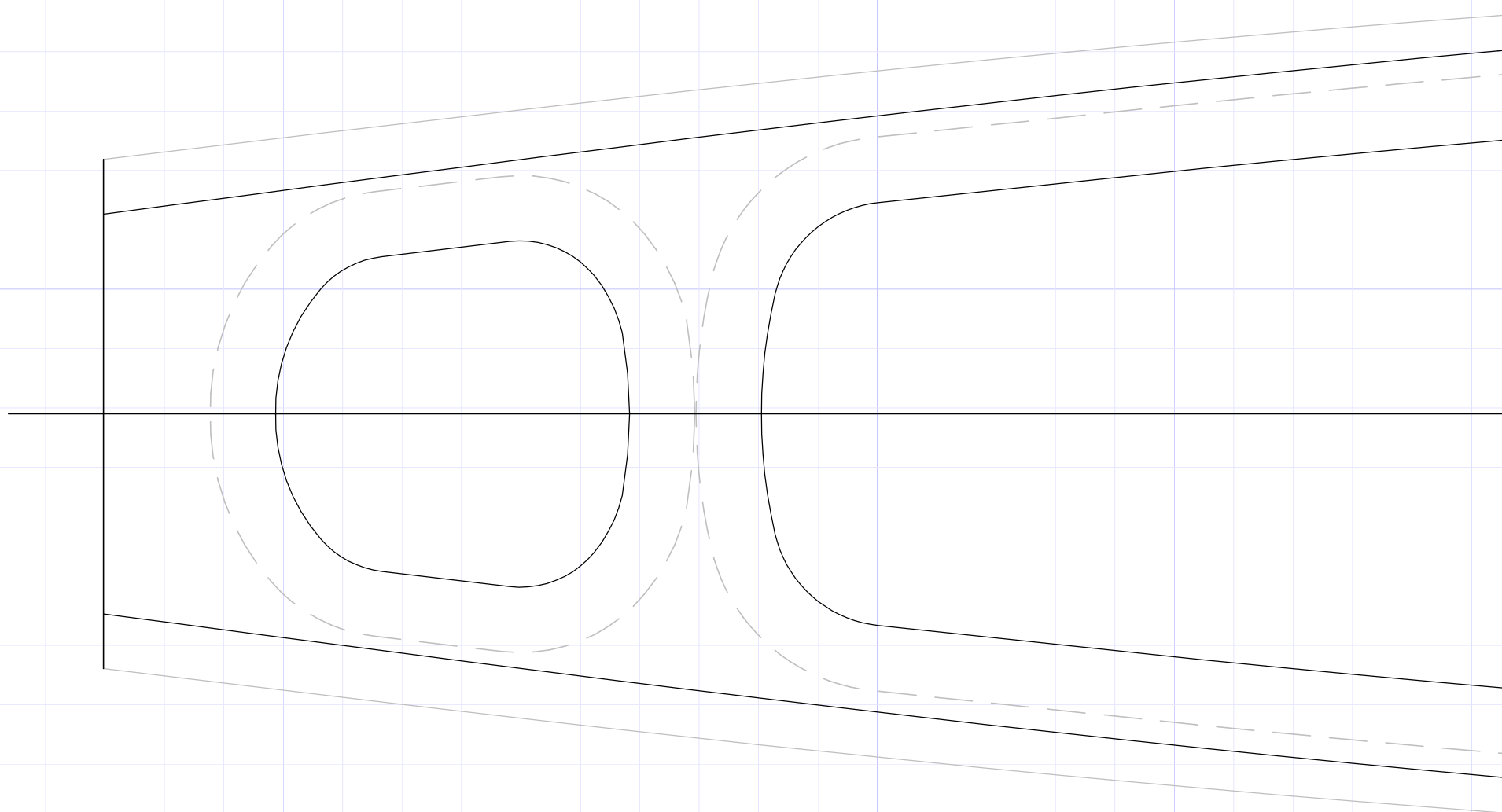
Design by: Andreas Hoffmann

v2.12 Feb-2017

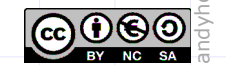
<https://rg-andy.blogspot.de/>

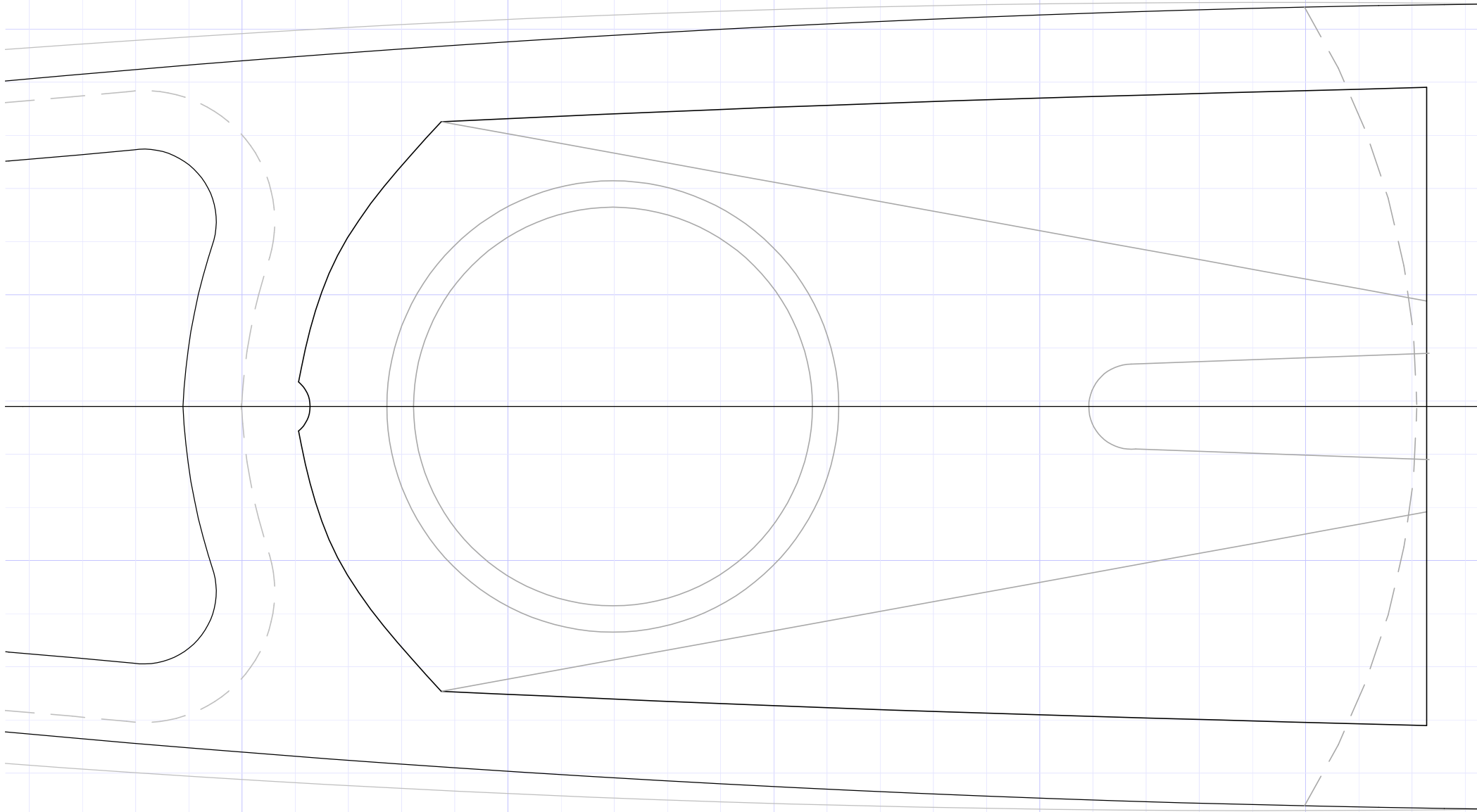


andyhoff@web.de



manta2017 - IOM
Design by: Andreas Hoffmann
v2.12 Feb-2017
<https://rg-andy.blogspot.de/>





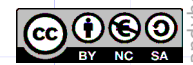
manta2017 - IOM

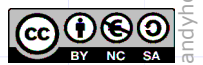
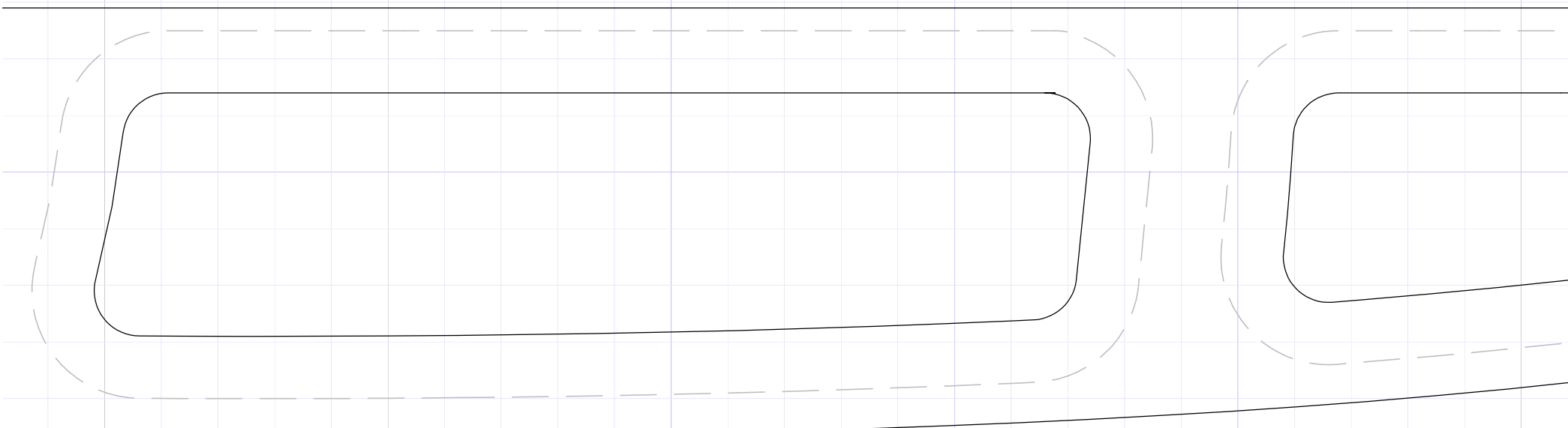
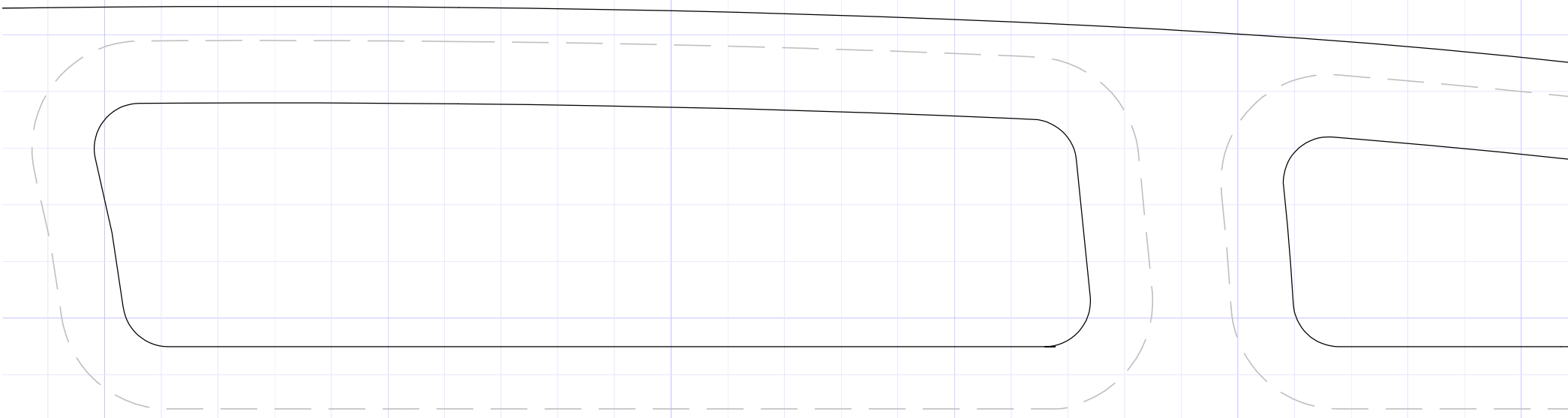
Design by: Andreas Hoffmann

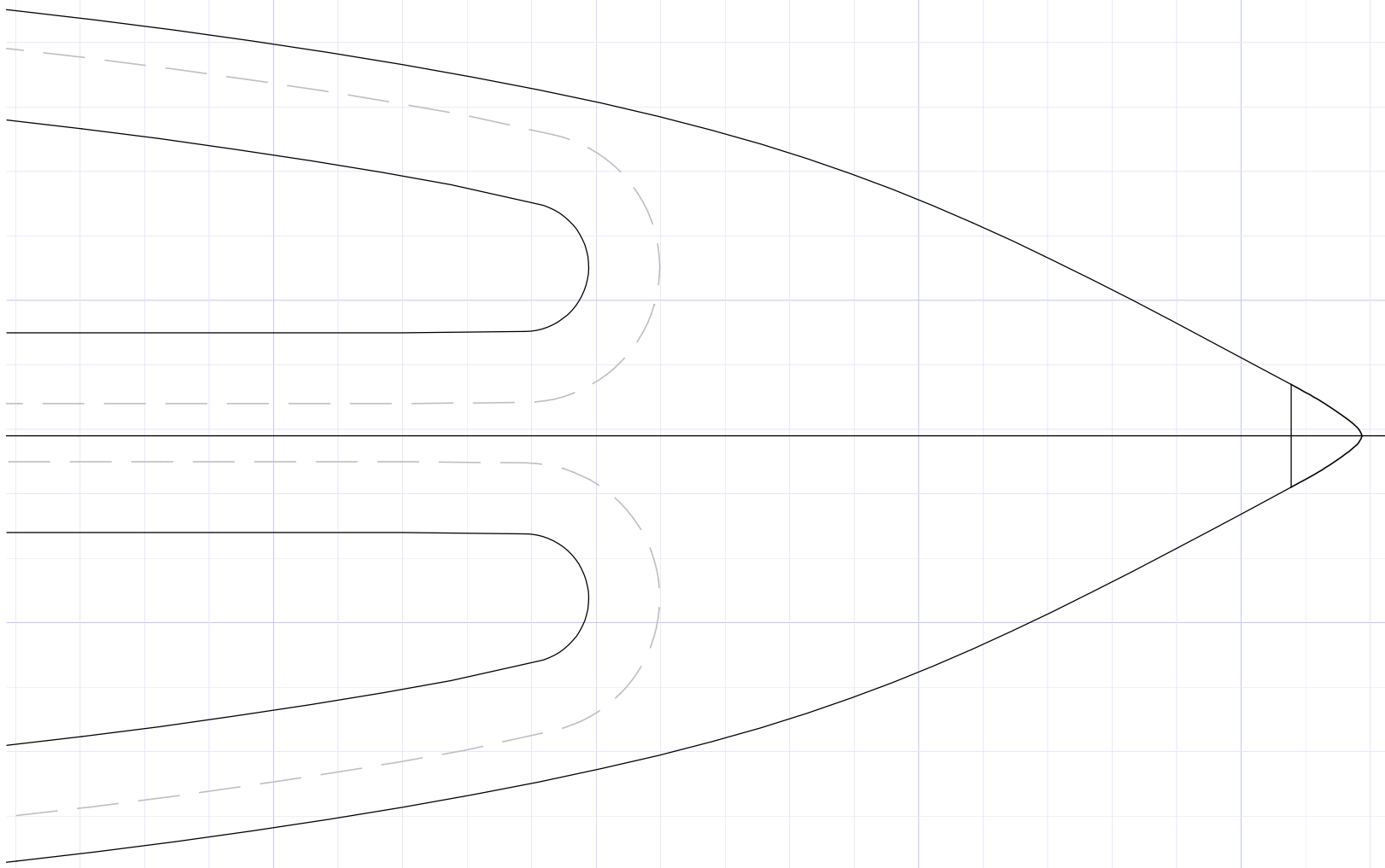
v2.12 Feb-2017

<https://rg-andy.blogspot.de/>

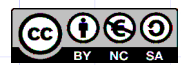
andyhoff@web.de







manta2017 - IOM
Design by: Andreas Hoffmann
v2.12 Feb-2017
<https://rg-andy.blogspot.de/>



andynhoff@web.de

